



# 蝴蝶生命史

*Butterfly Life Histories*



# *Hasora Moore 1881 taminatus* (Hübner, 1818) *malayana* (C. & R. Felder, 1860)

*Hasora taminatus malayana* : Lo, 2005, *Hong Kong Butterflies*, 2nd edition.

*Hasora taminatus* : Young & Yiu, 2002, *Butterfly Watching in Hong Kong*.

*Hasora taminatus malayana* : Bascombe, Johnston & Bascombe, 1999, *The Butterflies of Hong Kong*.

*Hasora taminatus* : Walthew, 1997, *The Status and Flight Periods of Hong Kong Butterflies, Porcupine!* 16: 34-37

雌蝶產卵在寄主植物的嫩芽或嫩葉上，剛孵化的幼蟲會取食部分卵殼然後取食嫩葉，其後會取食成熟的葉片，幼蟲會用絲線縫成葉包，隨著幼蟲增長葉包亦會更換及擴大，最後終齡幼蟲會在葉包內化蛹，蛹殼會披上蠟粉，以作潤滑及保護。

The female butterfly lays her eggs on the young foliage of its host plant. The newly hatched larva will consume part of its eggshell and move on to feed on new foliage. Leaf shelter is built tightened with silk. Newer leaf shelter will be made as it grows older and larger. Pupation takes place within the leaf shelter. Waxy powder covers the pupa for lubrication and protection.

潘瑞輝 PUN Sui Fai



© 卵 Egg 0.5 mm diam 2 days 080530



© 一齡幼蟲 1st instar 2 mm 2 days 080531



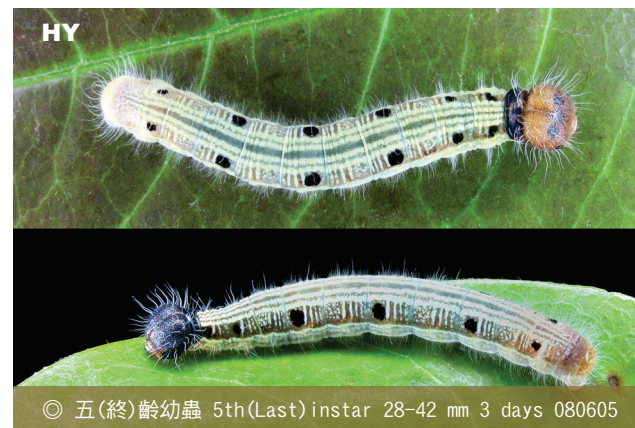
© 二齡幼蟲 2nd instar 5 mm 2 days 080601



© 三齡幼蟲 3rd instar 8 mm 2 days 080603



© 四齡幼蟲 4th instar 15 mm 2 days 080604



© 五(終)齡幼蟲 5th(Last) instar 28-42 mm 3 days 080605



© 蛹 Pupa 23 mm 7 days 080530





# 銀針趾弄蝶

White-banded Awl

Hesperiidae 弄蝶科



背面  
Dorsal

腹面  
Ventral

雄 Male 45 mm



背面  
Dorsal

腹面  
Ventral

雌 Female 45 mm

## 成蟲分佈 Distribution of adult



## 成蟲活躍月份 Flight period

① ② ③ ④ ⑤ ⑥ ⑦ ⑧ ⑨ ⑩ ⑪ ⑫

## 幼蟲寄主 Larval host plant



*Derris alborubra* 白花魚藤

*Derris trifoliata* 魚藤

*Derris alborubra* 白花魚藤 P. 306(2)





## *Badamia Moore 1881 exclamatonis* (Fabricius, 1775)

*Badamia exclamatonis* : Lo, 2005, *Hong Kong Butterflies*, 2nd edition.

*Badamia exclamatonis* : Young & Yiu, 2002, *Butterfly Watching in Hong Kong*.

*Badamia exclamatonis* : Bascombe, Johnston & Bascombe, 1999, *The Butterflies of Hong Kong*.

*Badamia exclamatonis*: Walthew, 1997, The Status and Flight Periods of Hong Kong Butterflies, *Porcupine!* 16: 34-37

雌蝶產卵在寄主植物的嫩芽或嫩葉上，剛孵化的幼蟲會取食部分卵殼然後取食嫩葉，幼蟲會用絲線縫成葉包，隨著幼蟲增長葉包亦會更換及擴大，最後終齡幼蟲會在葉包內化蛹。

The female lays her eggs on the new foliage of its host plant. Newly hatched larva will consume part of its eggshell and start to feed on the new foliage. Leaf shelter will be built tightened with silk. Newer leaf shelter will be made as it grows older and larger. Pupation takes place within the leaf shelter.

潘瑞輝 PUN Sui Fai



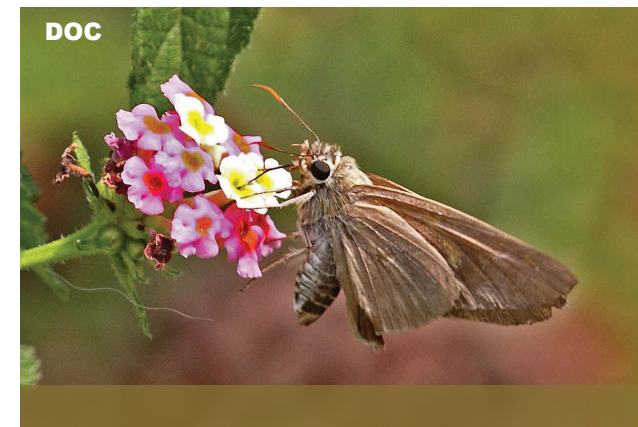
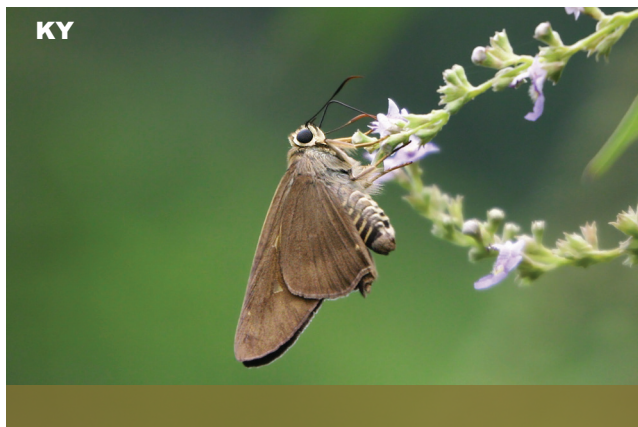




# 尖翅弄蝶

Brown Awl

Hesperiidae 弄蝶科



背面  
Dorsal

腹面  
Ventral

雄 Male 48 mm



背面  
Dorsal

腹面  
Ventral

雌 Female 54 mm

## 成蟲分佈 Distribution of adult



## 成蟲活躍月份 Flight period

① ② ③ ④ ⑤ ⑥ ⑦ ⑧ ⑨ ⑩ ⑪ ⑫

## 幼蟲寄主 Larval host plant



*Hiptage benghalensis* 風箏果/風車藤

*Hiptage benghalensis* 風箏果/風車藤 P. 143(1)